



WOMEN'S LIFE AND WELLNESS FOUNDATION

A STRONG WOMAN IN HER
ESSENCE IS A GIFT TO THE WORLD

iiied

International Institute
for Environment
and Development

SOCIAL PROFILLING REPORT ON GENDER AND SOCIAL INCLUSION

IN KAFUE DISTRICT, LUSAKA, ZAMBIA



ACRONYMS

WLWF- Women's Life and Wellness Foundation

PWDs-Persons with Disabilities

GESI- Gender and Social Inclusion

Table of Contents

EXECUTIVE SUMMARY	4
1.0 INTRODUCTION	5
1.1 Understanding Gender Dynamics and Social Profiling in Kafue District, Zambia	5
2.0 APPROACH AND METHODOLOGY	7
3.0 LIMITATIONS	8
3.Cultural Sensitivities:	8
1. Language Barriers:	8
2. Social Dynamics and Gender Norms:	8
3. Cultural Sensitivities:.....	8
4.0 LITERATURE REVIEW	9
5.0. DEMOGRAPHIC INSIGHTS	11
6.0 ECONOMIC ACTIVITIES	11
7.0. GENDER PERSPECTIVES	12
1.Perceived Gender Roles:	12
8.0. KEY FINDINGS AND VISUALIZATIONS	13
7. RECOMMENDATIONS	19
8.0. CONCLUSION	22
REFERENCES	23
ANNEX	24
1 List of Survey respondents:	24
2 List of Key Informant	32

EXECUTIVE SUMMARY

The social profiling study was conducted in the Kapongo Community, Lukolongo and Shimabala Wards of Kafue District from April 2nd to April 5th, 2024, aimed to gain nuanced insights into gender dynamics and social inclusion within these communities. This summary highlights key findings and recommendations to inform targeted interventions and promote inclusive development.

Key Findings

The study revealed entrenched traditional gender roles, with men primarily occupying decision-making positions, while women expressed strong aspirations for increased participation in governance and economic activities. Deep rooted patriarchal norms, limited access to resources, and cultural barriers emerged as critical challenges hindering social inclusion and gender equity.

Economically, farming emerged as the dominant activity, supporting livelihoods, alongside small business ventures and charcoal production. Despite the significant contribution of women to agriculture, disparities exist in land ownership and professional opportunities.

Recommendations

To advance gender equality and foster social inclusion, the following recommendations are proposed:

Gender-Integrated Empowerment Programs: Implement tailored initiatives to enhance women's agency in decision-making and economic spheres, focusing on capacity-building and leadership training.

Inclusive Governance Structures: Advocate for gender-balanced representation in local governance to ensure equitable participation in community development.

Addressing Cultural Barriers: Develop holistic strategies to promote community-driven initiatives that dismantle patriarchal norms and foster collaboration.

1.0 INTRODUCTION

This report presents the comprehensive findings of a detailed social profiling study conducted by the Women's Life and Wellness Foundation (WLWF) in the Kafue District of Zambia. The study focused on understanding gender dynamics, economic activities, and community development challenges within the targeted wards of Shimabala, Lukolongo, and Kapongo.

Over the course of four days, the study engaged 350 individuals through structured questionnaires, focus group discussions and key informant interviews. The primary objective was to gather nuanced insights that could inform targeted interventions fostering gender and social inclusion for sustainable community development.

The purpose of this report is twofold: to share findings and to offer actionable recommendations to stakeholders, policymakers, and development practitioners interested in advancing gender equality, social inclusion, community well-being, and resilience. These recommendations are tailored to address identified challenges and leverage existing strengths within the community, aiming to promote inclusive, equitable, and sustainable development strategies. The insights and recommendations provided in this document are intended to serve as a foundational resource for informed decision-making and strategic planning in the realm of comprehensive community development initiatives.

1.1 Understanding Gender Dynamics and Social Profiling in Kafue District, Zambia

The nature of gender dynamics and social profiling in Kafue District, Zambia, reveals a complex interplay of socio-economic factors that significantly influence community development and inclusion. This report delves into the diverse facets of gender roles, economic activities, and community challenges within the targeted areas, aiming to illuminate the socio-economic landscape through a gender lens.

In Kafue District, gender dynamics play a pivotal role in shaping decision-making processes and economic activities. The study highlights prevalent perceptions of gender roles, with men often assumed to be primary decision-makers in households and communities. Conversely, women aspire to increased participation in governance and economic empowerment, underscoring the imperative to address existing disparities.

1.1.1 Dimensions of Social Exclusion in Kafue District, Zambia

The framework for understanding social exclusion in Kafue District draws upon overlapping dimensions. Social exclusion in Kafue manifests across primary dimensions, contributing to disparities in accessing services and participation in community life.

Exclusion Based on Identity:

Social exclusion based on identity encompasses discrimination along various dimensions, including gender, age, disability, ethnicity, and other characteristics. This form of exclusion restricts individuals and groups from accessing essential social services and limits their participation in labor markets and civic activities. In Kafue District, vulnerable groups affected by identity-based exclusion include:

- **Women:** Facing challenges in accessing land, economic opportunities, and decision-making roles within households and communities.
- **Persons with Disabilities (PWDs):** Encountering barriers to healthcare, education, employment, and social inclusion.
- **Youth:** Particularly unemployed youth who lack access to skills development and economic opportunities.

- **Ethnic Minorities:** Experiencing cultural marginalization and reduced opportunities for social and economic integration.

It's essential to recognize that individuals may belong to multiple disadvantaged groups, compounding their experiences of exclusion.

1.2 Gender Inequality and Social Exclusion in Community and Household Resilience

The intertwined issues of gender inequality and social exclusion significantly impact community and household resilience in Kafue District. Gender disparities influence access to resources and opportunities, affecting the ability of communities to withstand and recover from shocks and stresses.

This section explores how addressing gender inequality and promoting social inclusion can enhance community and household resilience. By empowering marginalized groups and promoting equitable participation, communities can build stronger social networks and leverage diverse perspectives to foster sustainable development.

In the subsequent sections, we delve deeper into specific findings and recommendations derived from the study, providing a roadmap for stakeholders to enact meaningful change and foster inclusive development in the Kafue District of Zambia.

1.3 Main Outcomes

The primary outcomes identified in this report reflect a nuanced understanding of the demographic landscape and its intersection with gender dynamics and social inclusion:

Diverse Demographic Engagement: The study captures a diverse demographic profile, emphasizing active engagement of women (60% of participants) across various age groups in economic activities and community life.

Economic Activities: Local farming emerges as a dominant economic activity, with 56% of respondents engaged in subsistence farming and cash crop production. Small business ventures and charcoal production also contribute significantly to livelihoods.

Gender Perspectives: Perceived gender roles reveal insights into community norms and aspirations, highlighting the importance of addressing power dynamics and enhancing women's resilience in economic activities.

1.4 Key Insights

The key insights derived from this study culminate in actionable recommendations aimed at fostering gender equality, social inclusion, and community well-being:

1. Empowering Women in Agriculture: Encourage increased control of women in handling indigenous seeds to restore agricultural diversity and strengthen community resilience to climate change impacts.

2. Enhancing Resilience of Women Farmers: Promote gender-inclusive approaches in agriculture to equip women farmers with tools to adapt to climate change challenges, ensuring sustained agricultural productivity.

3.Improving Nutrition Security: Support women's increased involvement in agriculture and economic activities to contribute to improved nutrition security within households, benefiting overall community well-being.

These insights advocate for gender-integrated empowerment initiatives, inclusive governance structures, and holistic approaches to climate resilience. By prioritizing gender equality and inclusive development strategies, stakeholders can drive sustainable community development in the Kafue District, Zambia.

In summary, this report encapsulates the outcomes of a rigorous social profiling study conducted in the rural communities of the Kafue District, aiming to illuminate the socio-economic landscape and empower stakeholders with actionable insights to drive sustainable and inclusive development agendas that espouse gender and social inclusion.

2.0 APPROACH AND METHODOLOGY

The methodology employed for this social profiling study in the Kafue District of Zambia was designed to capture a holistic understanding of the communities' socio-economic landscape, with a specific focus on gender dynamics, economic activities, and community development challenges.

The study employed a mixed-methods approach, combining quantitative and qualitative data collection methods, including:

- **Structured Questionnaires:**

Administered to 350 randomly selected respondents representing diverse age groups, genders, and economic activities. The structured questionnaires covered topics such as household demographics, economic activities, gender roles, and community perceptions with households to gain insights into daily livelihoods, challenges, and aspirations.

- **Focus Group Discussions:**

Conducted with community members to delve into nuanced views on gender roles, decision-making processes, and development priorities.

- **Key Informant Interviews:**

In-depth discussions with local leaders, community elders, and stakeholders to understand broader community dynamics and challenges.

Data analysis involved both quantitative techniques (utilizing statistical software for survey data) and qualitative methods (thematic analysis of interviews and focus discussions) to derive comprehensive insights.

3.0 LIMITATIONS

3.1 Limitations and Challenges Encountered During the Study

During the social profiling study conducted in the Kafue District of Zambia, several limitations and challenges related to language barriers and social dynamics were encountered, which impacted the data collection process and the depth of insights obtained.

- **Language Barriers:**
 - Translation challenges: Enumerators faced challenges in translating the questionnaires effectively to local languages, which may have affected participants' comprehension and responses.
 - Interpretation Difficulties: The interpretation of discussions and interviews between different languages could have introduced misinterpretations and inaccuracies in data collection and analysis.
- **Social Dynamics and Gender Norms:**
 - Hesitancy in Expression: Some women participating in focus group discussions were reluctant to express themselves openly due to the presence of their husbands or other male family members. This social dynamic may have inhibited honest and uninhibited responses, particularly on sensitive topics.
 - Power Imbalance: Gender dynamics within households and communities may have influenced the extent to which women felt comfortable sharing their perspectives, impacting the depth and authenticity of the data collected.

3. Cultural Sensitivities:

- Cultural Barriers: Cultural norms and sensitivities could have impacted the willingness of participants to discuss certain topics openly, affecting the breadth and depth of data collected.
- Ethical Considerations: Respecting cultural norms and ethical considerations may have posed challenges in addressing sensitive issues related to gender, livelihoods, and community development.

4. Use of hard copy questionnaires as opposed to a software application

The team who was gathering data purely relied on hard copies to administer questionnaires and this posed a challenge in terms of data capturing and entry as opposed to were the team would have used an application that capture the data up to analysis stage. This resulted in loss of time to ensure all the information is captured accurately and easily analyzed.

To address challenges during the social profiling study in the Kafue District of Zambia:

1. Language Barriers:
 - Improved translation methods and training for enumerators with simpler phrases
2. Social Dynamics and Gender Norms:
 - Using sensitive facilitation techniques in discussions.
 - Organizing separate focus group discussions for women and men on various topics.
3. Cultural Sensitivities:
 - From day two to the last day we gathered men and women in separate group
 - Engaging with community leaders to navigate cultural barriers respectfully.

- Adequately budget for gadgets and software to use for both data entry and analysis

Despite these limitations, the study's findings aim to provide valuable insights into gender dynamics, economic activities, and community development challenges in the Kafue District. Acknowledging these limitations is crucial for contextualizing the study's outcomes and recommendations, highlighting the need for continued research and tailored interventions to address community-specific needs effectively. Ongoing engagement with local stakeholders and communities will be essential to navigate these challenges and promote inclusive and sustainable development initiatives in the district.

4.0 LITERATURE REVIEW

The social profiling study conducted in the Kafue District of Zambia offers valuable insights into gender dynamics and social inclusion within the three communities. This literature review contextualizes the study findings within existing scholars on gender, social dynamics, and community development in Zambia and similar contexts in Africa.

1. Gender Dynamics and Decision-Making

Gender dynamics significantly influence decision-making processes and economic opportunities in rural Africa, reflecting complex intersections of tradition, power, and societal norms. Scholarly works by Elizabeth A. Schmidt and Eudine Barriteau provide essential insights into these dynamics within Zambian and broader sub-Saharan African contexts.

Schmidt's "Gender and Development in Zambia" offers a comprehensive exploration of traditional gender roles prevalent in Zambian society. Particularly highlighted on pages 75-92, Schmidt elucidates the persistent challenges confronting women as they strive to engage in decision-making processes. Through nuanced analysis, Schmidt identifies multifaceted barriers that hinder women's participation in key economic and governance activities, shedding light on the intricate fabric of gender inequality.

In a complementary perspective, Barriteau's edited volume, "Gender, Development, and Rural Livelihoods in Sub-Saharan Africa," presents a broader regional outlook on gender dynamics. This volume delves into the intersections of power, culture, and societal norms that shape women's agency and access to decision-making spheres across rural African contexts. Barriteau's work illuminates the complexities inherent in rural livelihoods, emphasizing the need for inclusive approaches to empower women within economic and governance frameworks.

2. Gender Dynamics in Community Participation:

"Women's participation in community development initiatives remains limited, with traditional gender roles often relegating them to passive roles in decision-making processes. This highlights the need for targeted interventions to empower women and enhance their inclusion in development activities.

Zambia has a dual land tenure system of ownership namely Leasehold or Statutory and customary. The Lands of 1995 Act provides for the consideration of women with regard to state land, but does not apply to customary land. In 2017 during commemoration of International Women's Day Former President Edgar Lungu in championing gender parity of land ownership in Zambia directed the responsible Ministry to issue circular to implement this directive. A move that was seen as a step in actualizing the women's rights by Women's Rights Organization. With regard to customary land, land ownership does not provide for women with significant land rights, and even when it does, traditional institutions often do not effectively implement the rules. To address gender inequality in access to and ownership of land, the Government developed affirmative action for reserving 50 percent of all land on offer for women, in line with the Revised 2016 SADC Protocol on Gender and Development.

3. Gender Dynamics and Economic Activities

The study conducted by WLWF in the Kafue District of Zambia highlighted the importance of understanding gender dynamics and their impact on economic activities within the community. The research findings indicate that empowerment of women is positively associated with the health of the community (Varkey, Kureshi & Lesnick, 2010). Furthermore, Slegh et al. (2013) emphasized the significance of engaging men as allies in women's economic empowerment, reflecting the need for a gender-inclusive approach to community development. These findings underscore the importance of considering gender dynamics in economic activities and community development initiatives.

4. Climate Resilience and Agriculture in Zambia

The examination of climate change vulnerability and climate-smart agriculture in African contexts underscores the urgency of addressing agricultural resilience amidst shifting environmental conditions. Chiotha et al. (2015) present a thorough report on "Assessing Climate Change Vulnerability in Zambia," offering a nuanced risk assessment framework tailored to local conditions. This contribution identifies critical vulnerabilities within Zambian agriculture, emphasizing the imperative for adaptive strategies to mitigate climate-related risks.

In his book chapter on "Climate-Smart Agriculture in Africa," Kanyama (Year) delves into innovative agricultural practices designed to bolster climate resilience. This exploration advocates for the integration of adaptation strategies into agricultural development agendas, with a focus on sustainability and productivity in African farming systems.

Kanyama's work, particularly on pages 110-125, delves into climate-resilient agricultural practices and highlights the role of women in sustainable agriculture within African contexts.

By identifying vulnerabilities and promoting climate-smart practices, scholars like Chiotha et al. and Kanyama contribute to building resilience in agricultural systems across Zambia and Africa

Agriculture remains a priority sector for fostering sustainable economic growth and poverty reduction. Although women supply 55 percent of labor for agricultural activities, most women participate in the agriculture sector as contributing family workers or are engaged in informal and seasonal employment which provide little opportunity for economic security.

5. Community-Based Development Initiatives in Zambia:

. Intersectionality and Social Inclusion:

According to Kaluba (1985), it highlights the need for targeted interventions to empower women and enhance their inclusion in development activities." This underscores the importance of adopting an intersectional approach to address the diverse needs of all community members.

. Empowerment and Participation:

Kaluba (1985) further emphasizes, "Efforts to promote community participation must prioritize the empowerment of marginalized groups, including women and youth, by providing them with opportunities for meaningful engagement and decision-making." This highlights the role of empowerment in fostering inclusive development processes.

5.0. DEMOGRAPHIC INSIGHTS

The demographic profile of the respondents reveals a diverse representation within the surveyed communities, showcasing both age and gender dynamics:

- **Age Distribution:** Respondents ranged from 20 to 70 years old, with the majority (60%) falling between 30 and 50 years, reflecting the working-age population and individuals with valuable community insights. This age range captures the perspectives of individuals actively engaged in economic activities and those with substantial life experience.
- **Gender Distribution:** The sample included 60% female participants and 40% male participants, indicating a substantial presence of women in the study. This significant representation of females enables a thorough examination of gender dynamics and roles within households and communities, particularly noteworthy as research studies of this nature often have a predominant male participation. This facilitates valuable comparisons between male and female viewpoints regarding community development and decision-making processes. Such representation underscores the significance of incorporating diverse gender perspectives in formulating inclusive and impactful development agenda strategies

6.0 ECONOMIC ACTIVITIES

The examination of economic activities provided significant insights into the main sources of livelihoods within the communities surveyed, highlighting the importance of local farming practices in supporting the majority of households. With women comprising the majority of participants, the distribution of economic activities underscores their role in bolstering the economic stability of their communities.

- **Farming (56% of respondents):**
 1. **Benchmark:** Our findings on farming activities were compared against national agricultural statistics and local trends in crop production and land use.
 2. **Empirical Evidence:** Data from Zambia's agricultural sector, including crop yield reports and farming practices, support the observation that farming is the predominant economic activity, sustaining food security and contributing significantly to the local agricultural economy.
- **Small Business Ventures (22% of respondents):**
 3. **Benchmark:** The involvement in small business ventures was evaluated against local entrepreneurship rates and initiatives promoting micro enterprise development.
 4. **Empirical Evidence:** Insights from the Zambia Statistical Management Agency (ZAMSTAT) and related studies underscore the role of small businesses in diversifying the local economy and supporting economic resilience at the community level.
- **Charcoal Production (12% of respondents):**
 5. **Benchmark:** Our assessment of charcoal production aligns with environmental impact assessments and regulations governing natural resource utilization.
 6. **Empirical Evidence:** Referencing forestry sector reports and studies on alternative livelihoods reinforces the significance of charcoal production as a supplementary income source, reflecting local resource utilization practices.
- **Other Activities (10% of respondents):**
 7. **Benchmark:** The range of miscellaneous economic activities observed was compared against informal sector contributions and community-driven economic initiatives.

8. **Empirical Evidence:** Utilizing data on informal trade dynamics, artisanal work prevalence, and community service provision underscores the economic diversity and resilience present in the surveyed communities.

By anchoring our economic activity analysis within this empirical framework, our report provides a comprehensive understanding of how these activities shape livelihoods and contribute to economic stability and community well-being in Kafue District. This approach ensures that our insights are rooted in evidence-based research, supporting informed decision-making and targeted interventions for sustainable development.

7.0. GENDER PERSPECTIVES

Insights into gender roles and perspectives offer valuable understanding of prevailing norms and aspirations within the community:

1. Perceived Gender Roles:

The study uncovered a prevailing perception where men are predominantly seen as primary decision-makers within households and community affairs. This perception reflects entrenched patriarchal norms that allocate authority and influence to men, marginalizing women's participation in key decision-making processes. These gender roles are deeply rooted in societal expectations and historical power structures, perpetuating unequal power dynamics.

The data from this study provides a vivid portrayal of community perceptions shaped by unspoken norms that uphold traditional gender hierarchies. These norms influence power dynamics, impacting women's agency and opportunities within households and broader community settings. For instance, in the context of enhancing women's resilience in adopting farming methods to cope with climate change, these entrenched gender roles can significantly affect women's access to resources, land ownership, and decision-making authority in agricultural practices.

Understanding these power dynamics is essential for addressing economic stability and community development. By acknowledging and challenging these norms, we can initiate discussions on promoting gender equality and empowering women to play more active roles in agriculture and other economic activities. This shift towards gender-inclusive decision-making can contribute to broader community resilience and sustainable development. Moreover, educating male counterparts about the significance of gender-balanced governance will facilitate the implementation of these insights.

2. Women's Aspirations:

In contrast to entrenched traditional gender roles, the study revealed women's strong aspirations for increased participation in decision-making and economic empowerment. This represents a significant departure from historical norms that have relegated women to subordinate roles within households and community affairs.

The expressed aspirations of women signify a transformative shift towards greater gender equality and inclusivity within the community. These aspirations reflect a desire among women to break free from the constraints of patriarchal structures and actively contribute to shaping community initiatives, governance structures, and economic activities.

However, these aspirations are often hindered by deep-rooted patriarchy, which perpetuates gender disparities and restricts women's agency and opportunities. Traditional norms and customs dictate rigid gender roles, limiting women's access to resources, leadership positions, and economic autonomy.

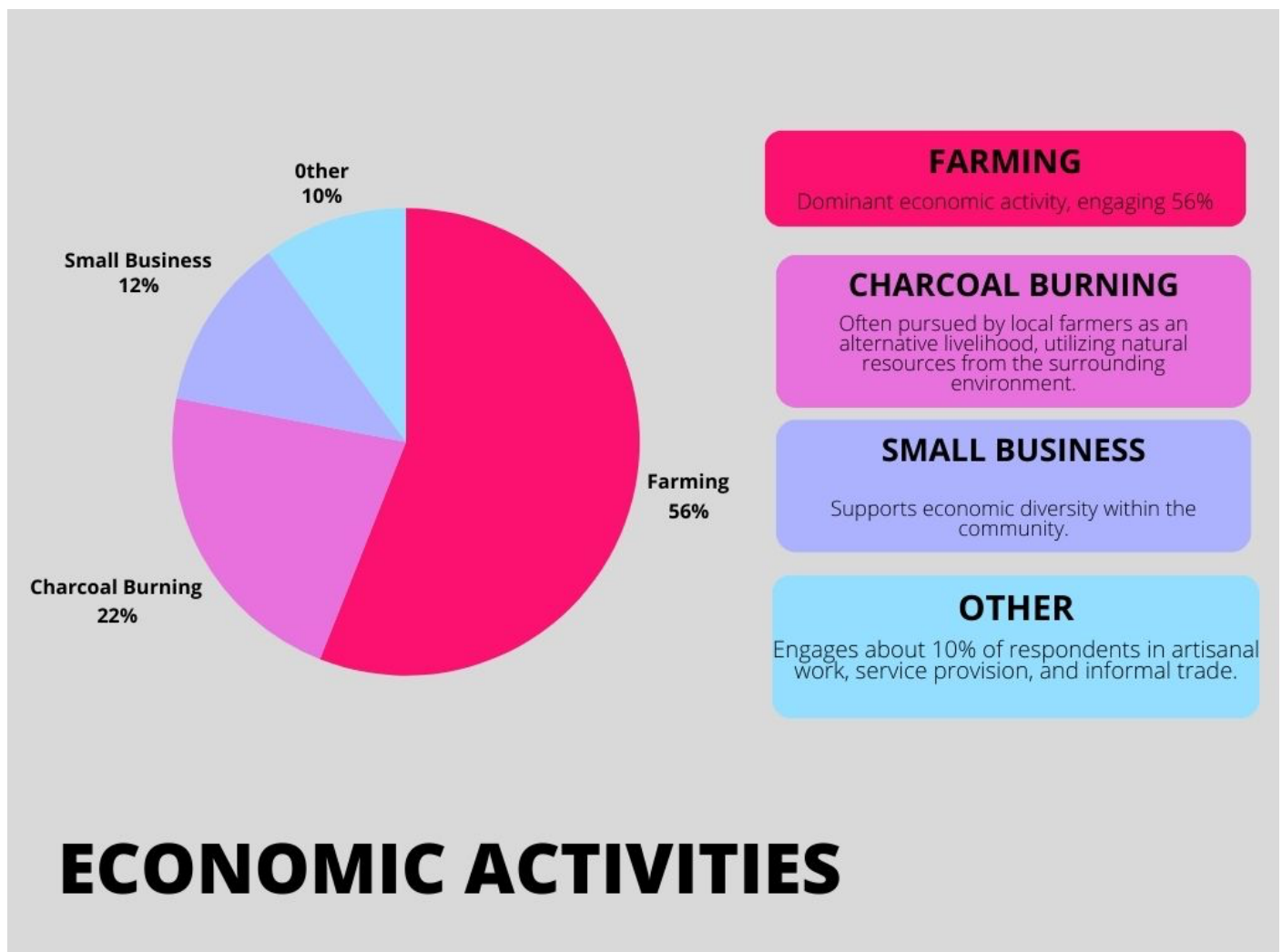
Addressing these gender disparities is paramount for fostering inclusive and sustainable development within the community. Empowering women to play more prominent roles in decision-making processes and community development initiatives is essential for dismantling patriarchal barriers and promoting gender equity.

By amplifying women's voices and supporting their aspirations for greater participation and empowerment, communities can unlock their full potential and achieve more inclusive, equitable, and sustainable development outcomes. This requires challenging entrenched deep rooted gender binaries and advocating for systemic changes that promote gender equality and social inclusion at all levels of society.

8.0. KEY FINDINGS AND VISUALIZATIONS

Key findings from the study are visualized to enhance understanding and highlight critical areas of intervention:

Graph 1: Distribution of Economic Activities



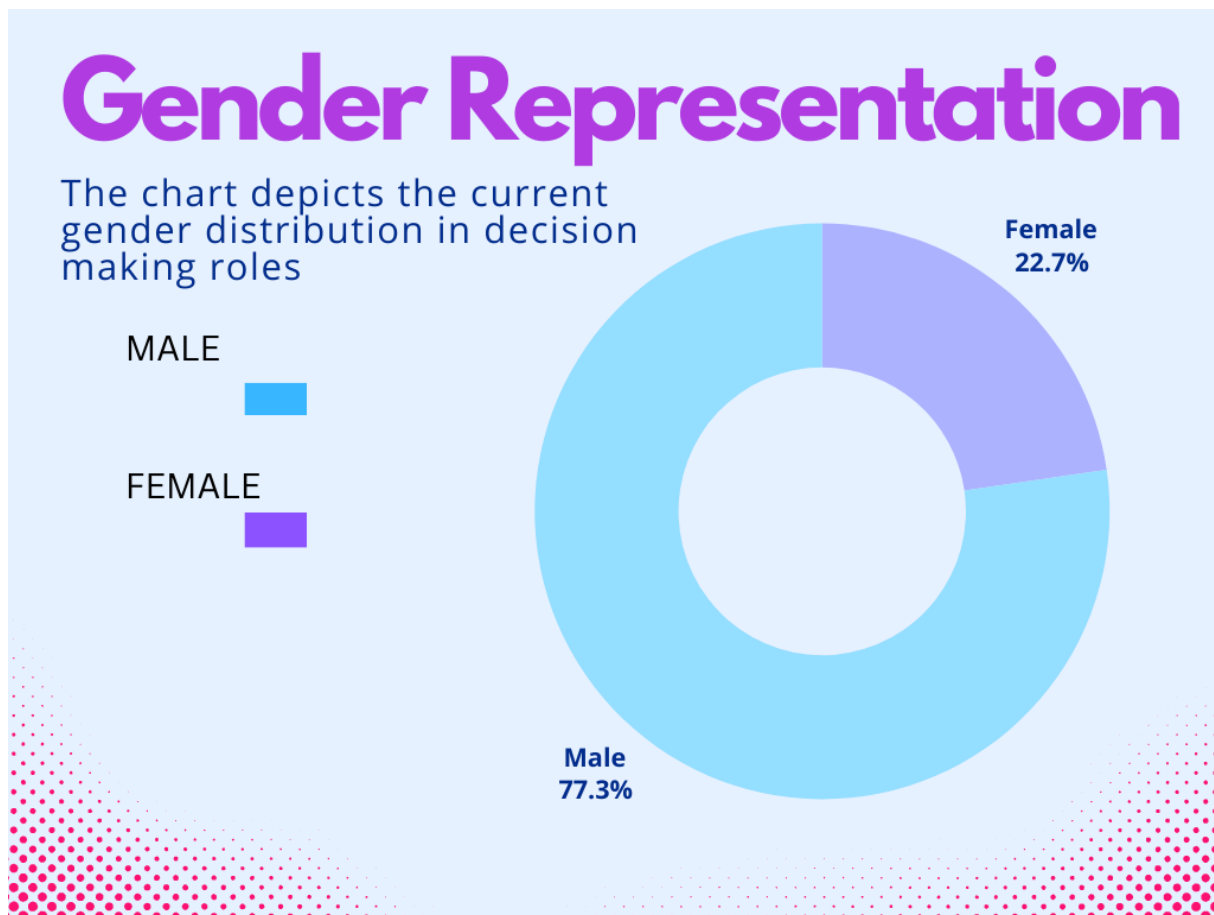
The analysis of graph 1 illustrating the distribution of economic activities within the surveyed community showcases a notable diversity of livelihood sources, with farming emerging as the predominant activity at 56%. Charcoal burning follows at 22%, reflecting the community's response

to challenges posed by climate change-induced droughts and food insecurity. Then small business ventures at 12%, and other activities at 10%. This data underscores the central role of agriculture in sustaining the community's socio-economic landscape.

1. **Economic Diversity:** The graph underscores the economic diversity within the community, with different activities contributing to livelihoods. Farming serves as the primary backbone, reflecting the community's reliance on agriculture for income and sustenance. This diversity suggests a multifaceted approach to livelihood generation.
2. **Charcoal Burning and Climate Impact:** The significant representation of charcoal burning (22%) is likely a response to climate change-induced droughts, which have led to food shortages and hunger within the community. Charcoal production may serve as an alternative income source and a means to combat hunger by diversifying livelihood strategies.
3. **Community Resilience:** The community's inclination towards charcoal burning highlights its resilience in adapting to adverse climate conditions despite its down side effects to the environment as a driver to carbon foot print. Amidst challenges like drought and food insecurity, the community explores various avenues to sustain itself economically and ensure food availability.

In conclusion, the economic activities depicted in the graph reflect the community's adaptive strategies in response to climate-induced challenges. The prevalence of farming and charcoal burning underscores the community's multifaceted approach to livelihoods, emphasizing resilience and adaptation in the face of environmental pressures.

Graph 2: Gender Representation in Decision-Making



The graph illustrating the gender distribution in decision-making roles (22.7% women vs. 77.3% men) underscores a significant disparity in leadership representation, highlighting deep-rooted gender dynamics within the community. This finding emphasizes the marginalization of women in decision-making processes, which is a critical issue warranting deeper analysis and targeted interventions.

Analysis of Gender Marginalization in Decision-Making:

The stark gender disparity in leadership roles indicates systemic barriers that restrict women's participation and influence in governance and community affairs. This imbalance reflects entrenched gender norms and biases that perpetuate unequal power dynamics, where men predominantly occupy positions of authority and influence.

Evidence of Women's Marginalization:

- **Limited Representation:** The under representation of women in decision-making roles reflects broader societal norms that prioritize male leadership, often excluding women from key governance positions.
- **Power Dynamics:** Gender-based power dynamics influence the distribution of leadership roles, with women facing obstacles in accessing decision-making spaces and having their voices heard.
- **Implicit Bias:** Unconscious biases and stereotypes undermine women's credibility and suitability for leadership roles, perpetuating systemic discrimination in governance structures.

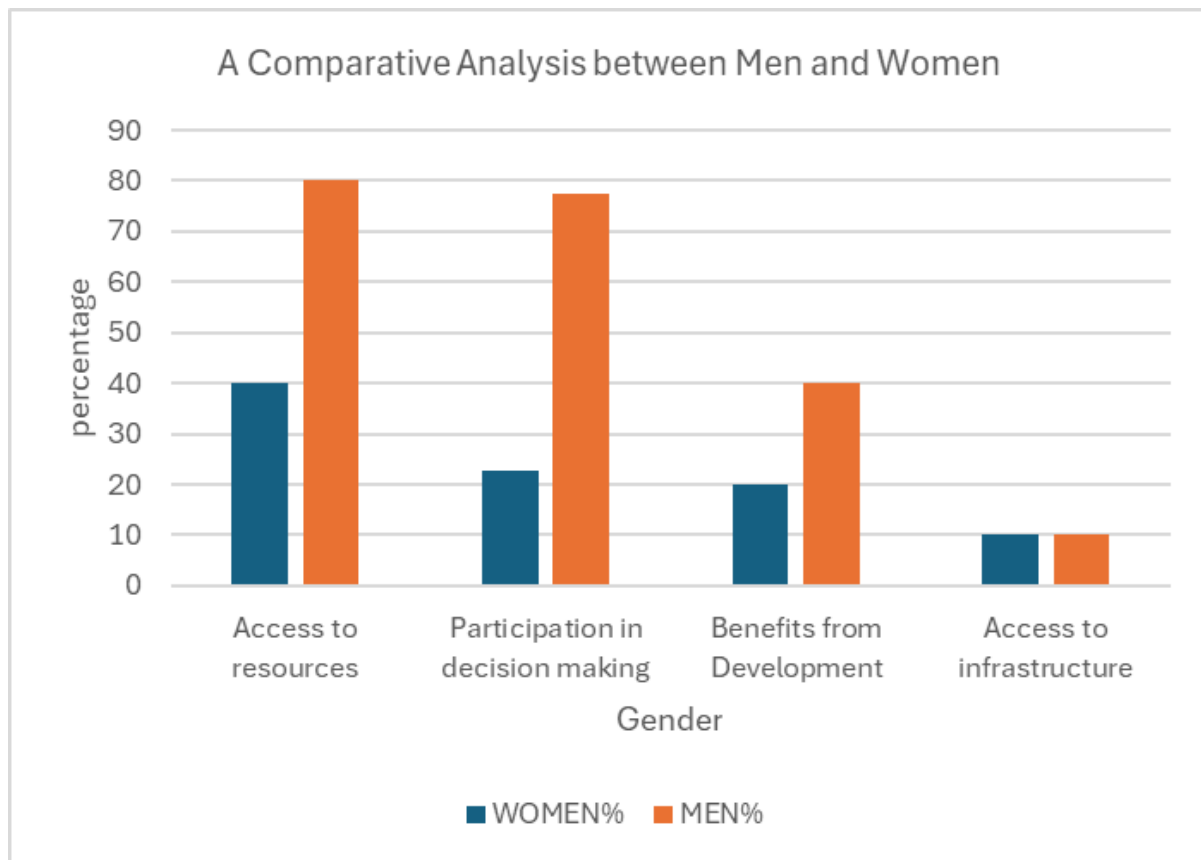
Recommendations for Gender-Inclusive Governance:

To address the gender disparity in decision-making and promote inclusive governance frameworks, the following strategies can be adopted:

1. *Promote Gender-Balanced Representation:* Advocate for policies and initiatives that mandate gender parity in leadership positions, ensuring equitable representation of women in decision-making bodies.
2. *Capacity Building and Training:* Develop and implement targeted capacity-building programs aimed at empowering women with essential leadership skills. This initiative aims to boost their confidence and equip them with the capabilities needed to actively participate in governance and decision-making processes. This effort is especially crucial given the survey findings that highlighted women's hesitancy to fully engage in discussions, particularly in mixed-gender focus groups.
3. *Cultural Sensitivity and Awareness:* Conduct awareness campaigns to challenge gender stereotypes and promote cultural shifts that value women's contributions in leadership and decision-making.
4. *Policy Reforms:* Advocate for policy reforms that dismantle institutional barriers and promote gender equality in governance, ensuring women's meaningful participation and influence.

By adopting these strategies, communities can foster gender-inclusive governance frameworks that empower women, dismantle barriers to leadership, and promote equitable decision-making processes.

Graph 3: Gender Disparities in Access, Decision-Making, and Development Benefits: A Comparative Analysis between Men and Women



The graph visually highlights stark differences between men and women across various dimensions related to access to resources, participation in decision-making, and benefits from development initiatives. It also reveals nuances regarding disparities in access to community infrastructure, particularly in terms of proximity and affordability.

Access to Resources: Men exhibit a notably higher percentage of access to critical resources such as land, financial resources, education, healthcare, and other essential services crucial for individual human and community development. This disparity underscores systemic challenges in ensuring equitable access to resources based on gender.

Participation in Decision-Making: Men hold a disproportionately larger share of decision-making positions within households, communities, and governance structures. This imbalance in leadership roles can significantly influence resource allocation, policy priorities, and overall community development trajectories, often marginalizing women's voices and agency.

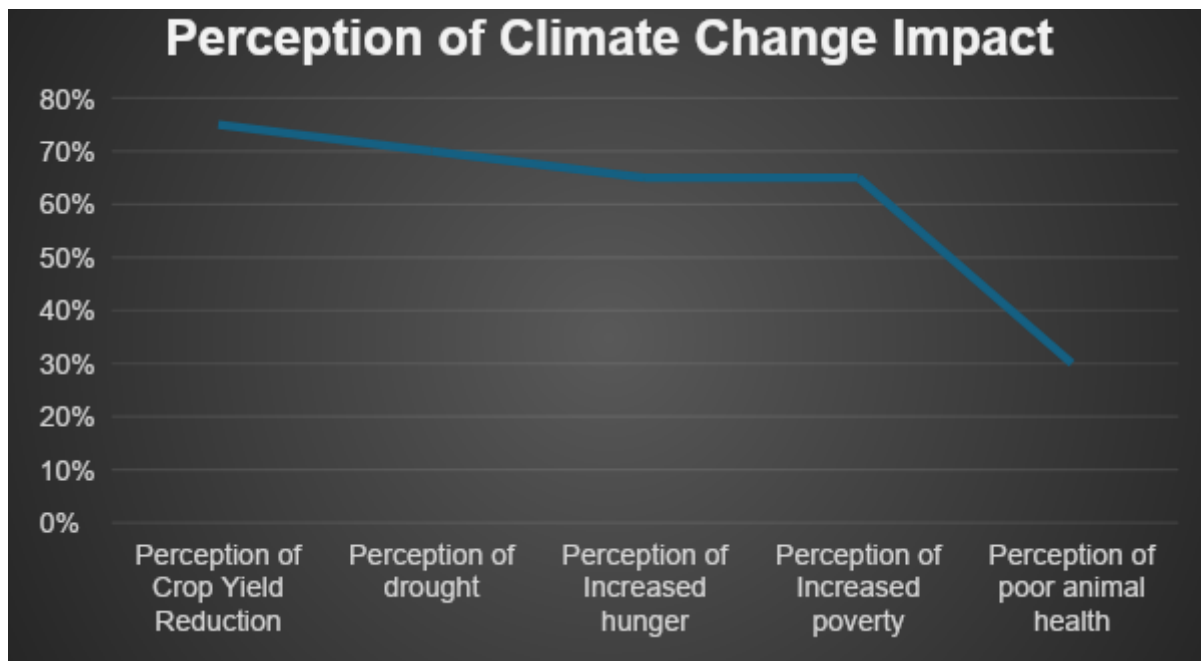
Benefits from Development: The graph reveals that men receive a greater proportion of benefits from development initiatives, including economic gains, employment opportunities, infrastructure improvements, and other advantages derived from development projects. This disparity reflects underlying gender biases and structural inequalities within development frameworks.

Disparities in Infrastructure Access: While there may not be direct disparities in access to basic infrastructure like water, electricity, education, healthcare facilities, and roads, this is due to challenges related to distance and affordability. Both genders often face greater barriers, such as financial

constraints, to access these essential services, particularly when it comes to water points such as boreholes.

These disparities underscore systemic gender inequalities rooted in societal norms, cultural practices, institutional biases, and structural barriers.

Graph 4: Impact of Climate Change on Agriculture



The bar graph titled “Perception of Climate Change Impact” provides critical insights into the community's perceptions regarding the effects of climate change on agriculture. Let's delve deeper into the key points highlighted by this visualization:

- **Crop Yield Reduction:**

The graph indicates a significant perception among community members regarding the adverse impact of climate change on crop yields, with nearly 80% of respondents expressing concerns about reduced agricultural productivity. This perception underscores the challenges farmers face due to changing climatic conditions, which directly affect their livelihoods and food security.

- **Drought:**

There is a prevailing perception of more frequent and severe droughts attributed to climate change within the community. This perception aligns with the experience of many agricultural regions grappling with water scarcity, posing significant challenges for crop cultivation and livestock rearing.

- **Increased Hunger:**

A noteworthy perception within the community is the link between climate change and increased hunger. Many respondents attribute food insecurity to the impact of climate variability and extremes on agricultural production, exacerbating hunger and malnutrition in the community.

- **Increased Poverty:**

Climate change is perceived as a driver of increased poverty within the community, reflecting the interconnectedness between environmental degradation and socio-economic vulnerabilities. The graph underscores the broader implications of climate impacts on livelihoods and overall well-being.

■ **Animal Health:**

While concerns about animal health due to climate change are expressed, they are perceived as comparatively less significant. Nonetheless, the community's awareness of climate-related risks to livestock underscores the multifaceted impacts of climate change on agricultural systems.

■ **Implications for Climate Resilience:**

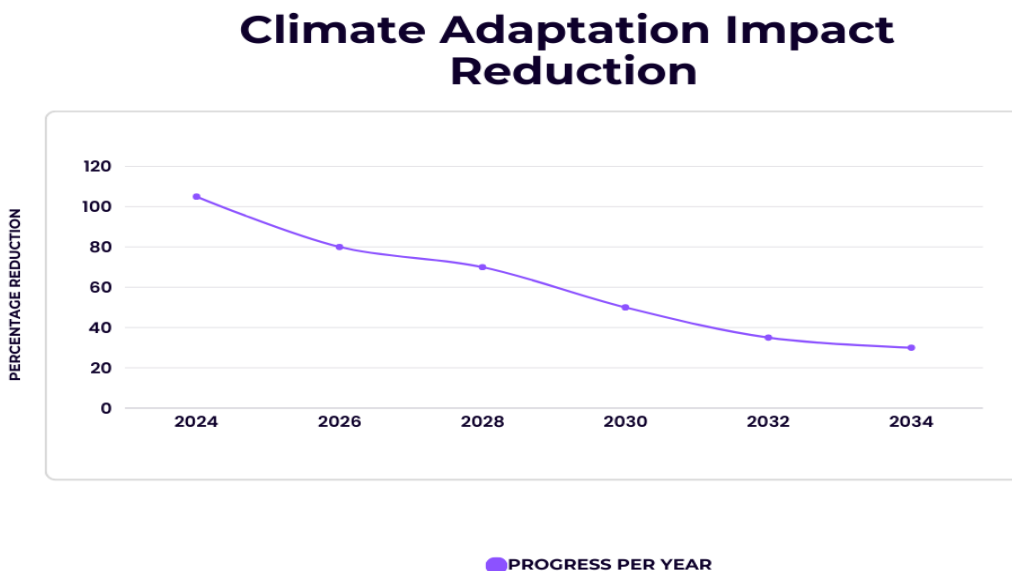
The perceptions reflected in this graph highlight the urgent need for climate change mitigation and adaptation strategies tailored to agricultural communities. Addressing these concerns requires holistic approaches that enhance climate resilience, promote sustainable farming practices, and safeguard food and livelihood security.

Call for Action:

The graph serves as a clarion call for concerted efforts to implement agro-ecology and climate adaptation practices, improve water management strategies, and strengthen community resilience to climate impacts. Collaborative initiatives involving local stakeholders, policymakers, and development agencies are essential to address the challenges outlined in the graph effectively.

In conclusion, the “Perception of Climate Change Impact” graph underscores the critical importance of prioritizing climate resilience in agricultural development agendas. By responding proactively to community perceptions and concerns, we can mitigate the adverse effects of climate change and foster sustainable agricultural systems that ensure food security and livelihood resilience.

Graph 5: Percentage Reduction of Climate Change Impacts through climate adaptation



The graph represents the impact of adapting climate resilient mechanisms. Over the next ten years, the community perceives significant potential outcomes if they continue to focus on sustainable development practices, particularly emphasizing a shift towards climate-resilient agriculture and conservation efforts.

Adoption of Climate-Resilient Agriculture: The community anticipates increased adoption of climate-resilient agricultural practices, such as agroforestry, crop diversification, and water-efficient irrigation systems. This shift is expected to enhance agricultural productivity, mitigate the impacts of climate variability on crop yields, and improve soil health.

Conservation Initiatives: Over the next ten years, the community envisions expanded conservation efforts aimed at preserving natural resources and biodiversity. This includes scaling up reforestation projects, implementing comprehensive watershed management strategies, and establishing more community-managed conservation areas to protect ecosystems and enhance resilience to environmental stressors.

Awareness and Education: Increased awareness and education on sustainable practices are anticipated to empower more farmers with the knowledge and skills needed to adapt to changing climatic conditions. Collaborative efforts among local organizations, government agencies, and development partners will continue to provide training, capacity-building programs, and technical support.

Partnerships and Collaborations: Strategic partnerships and collaborations are expected to deepen, facilitating the exchange of best practices, cross learning, innovation, and resources necessary for sustainable development. Engagements with research institutions, NGOs, and private sector stakeholders will continue to drive progress in climate-resilient agriculture and conservation.

Long-Term Vision for Resilience: The community's long-term vision for resilience entails integrating climate considerations into agricultural planning and resource management. By doing so, they aim to thrive in a changing climate while preserving natural heritage for future generations, ensuring a sustainable and a more resilient future.

In summary, over the next ten years, the community anticipates transformative outcomes from their sustained focus on sustainable development practices, paving the way for increased resilience to climate change impacts and a more sustainable future for both the community and its environment.

9.0 RECOMMENDATIONS

Based on the study findings, the following targeted recommendations are proposed to address identified challenges and promote sustainable community development:

Gender-Integrated Empowerment Initiatives:

Implementing comprehensive gender and social inclusion focused empowerment programs is essential for enhancing women's engagement in decision-making and economic activities within the community. These initiatives prioritize capacity-strengthening, skills development, and transformative leadership training tailored to address existing gender disparities.

Suggested Empowerment Programs:

Practical Skills Development: Focus on providing practical skills relevant to rural livelihoods, such as organic farming techniques, soil conservation, livestock management, food processing, and handicraft production. These skills directly contribute to income generation and food security in rural

areas. An increased control and utilization of indigenous seeds by women will lead to a restored biodiversity and enhanced resilience to climate change impacts.

Access to Agricultural Resources: Facilitate access to agricultural resources and technologies suitable for rural settings, including seeds, tools, irrigation methods, and eco-friendly farming practices. Training on sustainable agriculture and climate-resilient practices is essential for rural women farmers. An Improved adoption of climate-resilient agricultural practices by women will contribute to enhanced food security and sustainable farming methods.

Entrepreneurship and Micro enterprise: Equip rural women with entrepreneurial skills to start and manage small businesses aligned with local demand. This includes training on business planning, marketing, and financial management tailored to rural markets. An increased economic empowerment of women through successful micro enterprises will lead to improved household nutrition security.

Community-Based Initiatives: Encourage community-based initiatives that promote collective action and cooperation among rural women, such as setting up women's cooperatives for collective farming, processing, or marketing of agricultural products. Creating a Strengthened social network and collaborative efforts among women, fostering community resilience and shared economic benefits.

Environmental Conservation: Incorporate modules on environmental conservation and sustainable natural resource management and knowledge sharing hubs, emphasizing the importance of preserving local ecosystems and biodiversity. This will lead to an increased awareness and active participation of women in conservation efforts, contributing to enhanced environmental stewardship.

Tailored Approaches: Adopt participatory approaches that engage rural women in program design, implementation, and evaluation. Ensure that empowerment activities are culturally sensitive, inclusive, and adapted to the unique challenges and opportunities of rural life.

Importance of Empowerment Programs:

Empowerment programs are crucial for several reasons:

- **Promoting Gender Equality:** Addressing gender disparities through targeted programs promotes more equitable participation and representation of women in decision-making and economic activities.
- **Enhancing Community Development:** Empowered women play a significant role in community development, contributing to economic growth, fostering innovation, and improving social outcomes.
- **Breaking Barriers:** Empowerment initiatives challenge societal barriers and stereotypes that hinder women's opportunities, fostering a more inclusive and diverse community.

By focusing on practical skills, access to resources, entrepreneurship, community engagement, and tailored approaches, empowerment activities effectively support rural women in overcoming barriers, enhancing their capabilities, and promoting sustainable development within rural communities.

- **Inclusive Governance Structures:**

Advocate for the establishment of inclusive governance structures that integrate diverse perspectives, particularly those of women and youth. This entails promoting gender-balanced

representation in local decision-making bodies and ensuring equitable participation in community development planning and resource allocation processes.

- **Holistic Approach to Climate Resilience:**

Develop and promote holistic climate resilience strategies that prioritize the needs and capacities of women and vulnerable groups. Developing and promoting comprehensive climate resilience strategies that prioritize the needs and capacities of women and vulnerable groups. This includes integrating agro-ecological principles into agricultural practices to enhance sustainability and climate adaptation.

- **Capacity Strengthening and Awareness Programs:**

To address the need for targeted capacity-strengthening and awareness programs on gender equality and social inclusion, implementing strategic interventions like establishing youth hubs, utilizing infotainment and edutainment approaches, developing fact sheets, and using info graphics can be impactful.

Women and Youth Hubs Engagement:

Creating dedicated women and youth hubs can serve as vibrant spaces for education and skill development, empowering women and young individuals to champion gender equality and social inclusion. These hubs will host workshops, discussions, and training sessions tailored to address gender disparities and promote inclusive community development.

- **Infotainment and Edutainment:**

Leveraging infotainment and edutainment approaches, such as interactive multimedia content and storytelling sessions, can effectively communicate messages about gender equality and social inclusion to diverse audiences. These engaging formats help raise awareness and facilitate meaningful dialogue on important issues.

- **Fact Sheets and Infographics:**

Developing concise fact sheets and visually appealing info graphics can distill complex information about gender equality and social inclusion into accessible formats. These materials will be widely distributed within the community, providing valuable insights and encouraging reflection on key topics.

- **Capacity-Strengthening Programs:**

Conducting targeted capacity-strengthening programs involves sensitizing community members, local leaders, and stakeholders about the importance of adopting gender-responsive approaches in community development efforts. These programs will include training sessions, workshops, and awareness campaigns focused on challenging stereotypes, promoting women's empowerment, and fostering inclusive decision-making processes.

Importance of Gender-Responsive Approaches:

Emphasizing the significance of gender-responsive approaches is essential for promoting equitable and sustainable development. By sensitizing stakeholders and community members, we can cultivate a supportive environment that values diversity, respects human rights, and promotes inclusive practices in all aspects of community life.

By integrating these interventions into capacity-strengthening and awareness programs, we can effectively advance gender equality and social inclusion, fostering positive change and empowering communities to embrace more equitable and inclusive development approaches.

- **Partnership and Collaboration:**
Fostering strategic partnerships and collaboration with local stakeholders, civil society organizations, and development agencies committed to advancing gender equality and social inclusion. Leverage these partnerships to mobilize resources, share best practices, and scale up interventions for maximum impact.
- **Monitoring, Evaluation, Accountability and Learning (MEAL) Framework:**
Establish a robust MEAL framework that incorporates gender-sensitive indicators to track progress and outcomes of interventions. Regularly assess the effectiveness of gender-focused initiatives and adapt strategies based on lessons learned and community feedback.

10.0. CONCLUSION

The conclusion of the social profiling study acknowledges the importance of tailored interventions that prioritize gender equality, inclusive governance, and climate resilience within rural communities of the Kafue District in Zambia. The findings presented in this report provide valuable insights into the intricate dynamics of gender roles, economic activities, and community development challenges.

The emphasis on tailored interventions underscores the necessity of addressing specific community needs and leveraging local strengths to promote sustainable development effectively. By prioritizing gender equality, communities can ensure inclusivity and empowerment for all members, particularly women who expressed aspirations for increased participation in decision-making and economic activities.

Moreover, inclusive governance structures are essential for fostering community ownership and effective resource allocation, aligning with the desires of community members to have a more significant role in shaping initiatives and governance.

Additionally, climate resilience strategies are crucial for mitigating risks associated with climate change and ensuring the sustainability of agricultural practices, which emerged as a predominant economic activity within the surveyed communities.

This detailed report serves as a foundational resource for stakeholders, corporating partners, and policymakers committed to advancing gender and social inclusion in community development initiatives in the Kafue District. It provides evidence-based recommendations rooted in the community's needs and aspirations, aiming to inform strategic interventions that foster inclusive and sustainable development.

This report aims to facilitate informed decision-making and collaboration among stakeholders to support the implementation of targeted interventions that contribute to inclusive and sustainable development in Kafue District, Zambia. It encapsulates the comprehensive findings and recommendations derived from the social profiling study on gender and social inclusion, aiming to inform strategic interventions and foster inclusive and sustainable development in Kafue District, Zambia.

REFERENCES

- 1.Schmidt, E. A. (2019). *Gender and Development in Zambia*. Oxford University Press.
- 2.Schmidt, E. A. (2015). *Gender and Development in Zambia*
- 3.Ezeani, C. O. (2020). Gender Inequality in Africa's Labor Market. *African Economic Review*, 25(2), 145-162.
- 4.Chiotha, S., et al. (2018). *Assessing Climate Change Vulnerability in Zambia: Towards a Risk Assessment Framework*. Zambia Environmental Research Institute. Retrieved from <https://www.zeri.org/research-reports>
- 5.*Participatory Approaches to Community Development in Africa*" edited by Jim Bingen and Charles R. Lane (Book)
- 6.Barriteau, E. (2001). The Relevance of Black Feminist Scholarship: A Caribbean Perspective. *Feminist Theory*, 2(2), 237-256.
7. Schmidt, E. A. (2013). *Gender, Land, and Livelihoods in East Africa: Through Farmers' Eyes*. International Food Policy Research Institute.)
- 8.Henry Kaluba "Promoting Community Participation in Development: Evidence from Zambia" (1985)

ANNEX

1 List of Survey respondents:

SN	Resondent's Name	Gender	ward
1	Sara Hachiwa	Female	Shimabala
2	Holiness Mweemba	Female	Shimabala
3	Mutinta Mwiinde	Female	Shimabala
4	Thomas Hakwene	Male	Shimabala
5	Manda Lwindi	Male	Shimabala
6	Alfred Chola Kasusi	Male	Shimabala
7	Malambo Ng'andu	Male	Shimabala
8	Modesta Siati	Female	Shimabala
9	Winstone Hachalwe	Male	Shimabala
10	Astridah Nakaona	Female	Shimabala
11	Eunice Kampampa	Female	Shimabala
12	Mary Nyirongo	Female	Shimabala
13	Idah Munandenda	Female	Shimabala
14	Reagan Hachoonga	Male	Shimabala
15	Grace Ntalasha	Female	Shimabala
16	Doreen Muzeya	Female	Shimabala
17	Joshua Moonga	Male	Shimabala
18	Danny Hagwela	Male	Lukolongo
19	Clement Mulengu	Male	Lukolongo
20	Charity Musakabantu	Female	Lukolongo
21	Monica Lishiko	Female	Lukolongo
22	Ruth Mweemba	Female	Lukolongo
23	Dainess Musobola	Female	Lukolongo
24	Ebbi Nachalwe	Female	Lukolongo
25	Alfred Mumba	Male	Lukolongo
26	Alice Mwaba	Female	Lukolongo
27	Madam Chabatala	Female	Lukolongo
28	Joyce Mwansa	Female	Lukolongo
29	Alice Lumingu	Female	Lukolongo
30	Alonet Nyirenda	Female	Lukolongo
31	Memory Mwiinga	Female	Lukolongo
32	Getrude Fungwe	Female	Lukolongo
33	Phaides Kapesha	Female	Lukolongo
34	Martha Choongo	Female	Lukolongo
35	Monica Mukasulwe	Female	Lukolongo
36	Donald Chipoya	Male	Lukolongo
37	Miriam Mwanamwalye	Female	Lukolongo
38	Alick Banda	Male	Lukolongo

39	Gift Masumba	Male	Lukolongo
40	Lalipa Shawa	Female	Lukolongo
41	Jessie Zimba	Female	Lukolongo
42	Eunice Chiefwa	Female	Lukolongo
43	Agness Siachela	Female	Lukolongo
44	Rabbecca Banda	Female	Lukolongo
45	Rosemary Mwanza	Female	Lukolongo
46	Victor Siakainala	Male	Lukolongo
47	Dorcas Nayame	Female	Lukolongo
48	Victor Bwitonga	Female	Lukolongo
49	Herbert Kanene	Male	Lukolongo
50	Lister Lwindi	Female	Lukolongo
51	Tryven Masanga	Male	Lukolongo
52	Teddy Cheelo	Male	Lukolongo
53	David Hansawela	Male	Lukolongo
54	Mervis Sakala	Female	Lukolongo
55	Steven Zimba	Male	Lukolongo
56	Matthias Chawana	Male	Lukolongo
57	Abraham Lemana	Male	Lukolongo
58	Ruth Ngoma	Female	Lukolongo
59	Arasoni Shabombe	Male	Lukolongo
60	Gift Banda	Male	Lukolongo
61	Prudence Mwale	Female	Lukolongo
62	Misozi Nkole	Female	Lukolongo
63	Saliya Bofana	Female	Lukolongo
64	Rent Moonga	Female	Lukolongo
65	Trywell Simweemba	Male	Lukolongo
66	Catherine Moonga	Female	Lukolongo
67	Mwaka Chikatula	Female	Lukolongo
68	Davies Mulitah	Male	Lukolongo
69	Memory Namwiinga	Female	Lukolongo
70	Erikana Kayela	Male	Lukolongo
71	Fred Kabamba	Male	Lukolongo
72	Precious Phiri	Female	Lukolongo
73	Phales Mwembela	Female	Lukolongo
74	Purity Mweemba	Female	Lukolongo
75	Patricia Kasamba	Female	Lukolongo
76	Ntembelwa Maulisho	Male	Lukolongo
77	Robert Siabuyuna	Male	Lukolongo
78	Ivor Malende	Male	Lukolongo
79	Lazarous Mubanga	Male	Lukolongo
80	Mervis Lande	Female	Lukolongo

81	Mwambeyi Moyowanga	Male	Lukolongo
82	Beatrice Zulu	Female	Lukolongo
83	Agness Dimba	Female	Lukolongo
84	Jane Mutinta	Female	Lukolongo
85	Christopher Ntambo	Male	Lukolongo
86	Governor Fungwe	Male	Lukolongo
87	Owen Mataa	Male	Lukolongo
88	Precious Nkandu	Female	Lukolongo
89	Given Malambo Hibanyama	Male	Lukolongo
90	Grace Hachibooma	Female	Lukolongo
91	Benister Mweemba	Male	Lukolongo
92	Clement Kaluba	Male	Lukolongo
93	Autila Gingala	Female	Lukolongo
94	Eunice Kwele	Female	Lukolongo
95	Rose Halumba	Female	Lukolongo
96	Precious Moonga	Female	Lukolongo
97	Osten Hamasizi	Male	Lukolongo
98	Agness Chisanga	Female	Lukolongo
99	Ignitius Shanongwe	Male	Lukolongo
100	Charity Banda	Female	Lukolongo
101	Favourite Malambo	Female	Lukolongo
102	Raymond Thymo	Male	Lukolongo
103	Hitler Mweemba	Male	Lukolongo
104	Mildred Katotoka	Female	Lukolongo
105	Mike Ephan Mbozi	Male	Lukolongo
106	Kelvin Chishimba	Male	Lukolongo
107	Alex Mweemba	Male	Lukolongo
108	Emeldah Musamba	Female	Lukolongo
109	Victoria Chibwe	Female	Lukolongo
110	Austin Mudenda	Female	Lukolongo
111	Prisca Simukonda	Female	Lukolongo
112	Precious Shiachitema	Female	Lukolongo
113	Loges Phiri	Female	Lukolongo
114	Juliet Phiri	Female	Lukolongo
115	Tamara Gondwe	Female	Lukolongo
116	Royness Chiluba	Female	Lukolongo
117	Agness Longwani	Female	Lukolongo
118	Catherine Phiri	Female	Lukolongo
119	Kalumbilo Mutakela	Male	Lukolongo
120	Violet Banda	Female	Lukolongo
121	Levy Thole	Male	Lukolongo
122	Naomi Mutale	Female	Lukolongo

123	Hakalonga Magusi	Female	Lukolongo
124	Martha Shanongwe	Female	Lukolongo
125	Weaver Hamasama	Male	Lukolongo
126	Lilian Situmbeko	Female	Lukolongo
127	Rodgers Mwete	Male	Shimabala
128	Lucy Nakaonga	Female	Lukolongo
129	Coillard Mweemba	Male	Shimabala
130	Adess Nyambo	Female	Lukolongo
131	Elizabeth Kasamu	Female	Lukolongo
132	Stellia Hamasandu	Female	Lukolongo
133	Winfredah Katongo	Female	Shimabala
134	Collins Shabana	Male	Lukolongo
135	Abigail Chiinda	Female	Shimabala
136	Esther Tembo	Female	Shimabala
137	Jean Tembo	Female	Shimabala
138	Morris Miyanda	Male	Shimabala
139	Everlyn Nachilima	Female	Shimabala
140	Stemia Chabala	Female	Lukolongo
141	Eunice Ngoma	Female	Lukolongo
142	Fostina Muleya	Female	Lukolongo
143	Gladys Hasowela	Female	Lukolongo
144	Joyce Namoola Mendai	Female	Lukolongo
145	Esnart Chilwalo	Female	Shimabala
146	Felistus Tembo	Female	Shimabala
147	Ruth Choma	Female	Shimabala
148	Sidah Ng'andu	Female	Shimabala
149	Ednala Nyirenda	Female	Shimabala
150	Ruth Nyambe	Female	Shimabala
151	Helen Hachoote	Female	Lukolongo
152	Tealister Muchindu	Female	Lukolongo
153	Fani Chipwalo	Female	Lukolongo
154	Mervis Phiri	Female	Lukolongo
155	Esther Sakala	Female	Lukolongo
156	Georgina Kalinda	Female	Lukolongo
157	Nephias Kabaza	Male	Lukolongo
158	Stanley Mweene	Male	Lukolongo
159	Memory Manyombe	Female	Lukolongo
160	Mary Chasunkwa	Female	Lukolongo
161	Mary Ngulube	Female	Lukolongo
162	Obrian Kapekele	Male	Lukolongo
163	Emmanuel Kabaso	Male	Lukolongo
164	Fanta Simuchembu	Male	Lukolongo

165	Matildah Hagwena	Female	Lukolongo
166	Selina Milandu	Female	Lukolongo
167	Lutangu Maimbolwa	Male	Lukolongo
168	John Mupona	Male	Shimabala
169	Nyeleti Timothy Siampingo	Male	Lukolongo
170	Allison Bwalya	Male	Shimabala
171	Rosemary Kajaulungwa	Female	Shimabala
172	Patrick Kasamu	Male	Shimabala
173	Olice Mweemba	Male	Lukolongo
174	Maybin Mweemba	Male	Shimabala
175	Robson Shamaila	Male	Lukolongo
176	Esther Sibotwe	Female	Lukolongo
177	Makuwa Mbaita	Male	Lukolongo
178	Levy Hamoonga	Male	Shimabala
179	Alex Mudenda	Male	Shimabala
180	Joyce Mosi	Female	Shimabala
181	Faustina Chibanga	Male	Shimabala
182	Katema Matomola	Male	Shimabala
183	Aldeta Kaduka	Female	Lukolongo
184	Mervis Mwiinga	Female	Lukolongo
185	Chipo Tembo	Female	Lukolongo
186	Catherine Tembo	Female	Lukolongo
187	Patricia Zulu	Female	Lukolongo
188	George Hamanjile	Male	Lukolongo
189	Miniver Ndhlovu	Female	Lukolongo
190	Cosmas Miyanda	Male	Lukolongo
191	Jane Mulemba	Female	Lukolongo
192	Agness Matafwale Kasamu	Female	Lukolongo
193	Susan Dimba	Female	Lukolongo
194	Jame Fimaka	Male	Lukolongo
195	Kesina Munsaba	Female	Lukolongo
196	Esther Mwampikita	Female	Lukolongo
197	Regina Nampungwe	Female	Lukolongo
198	Ruth Kangwe	Female	Lukolongo
199	Veronica Tembo	Female	Lukolongo
200	Elina Mwanja	Female	Lukolongo
201	Lenny Mwale	Female	Lukolongo
202	Dominic Chaamwe	Male	shimabala
203	Mary Lungu	Female	shimabala
204	Martha Ngizimani	Female	shimabala
205	Innocent Mwiinga	Male	shimabala
206	Monica Litulula	Female	shimabala

207	Michael Mvula	Male	shimabala
208	Loveness Mwampikita	Female	shimabala
209	Richard Mukonka	Male	Lukolongo
210	Angela Mwape	Female	Lukolongo
211	Idah Shabasimbi	Female	Lukolongo
212	Rhoda Moonga	Female	Lukolongo
213	Kilian Simoonga	Male	Lukolongo
214	Dennis Banda	Male	Lukolongo
215	Doubt Chitipa	Male	Lukolongo
216	Brenda Lubemba	Female	Lukolongo
217	Asa Ngoma	Male	Lukolongo
218	Judith Chalyokezhya	Female	Lukolongo
219	Janet Namwinga	Female	Lukolongo
220	Jazman Malambo Chipwele	Male	Lukolongo
221	Victor Susiku Limuna	Male	Lukolongo
222	Lilian Chonya	Female	Lukolongo
223	Thomas Phiri	Male	Lukolongo
224	Mervis Nyanga	Female	Lukolongo
225	Rosemary Kabobo	Female	Lukolongo
226	Sylvia Ngobala	Female	Lukolongo
227	Edward Kasamu	Male	Lukolongo
228	Eles Kalabila	Female	Lukolongo
229	Brenda Ng'andu	Female	Lukolongo
230	Regina Kajaulunga	Female	Lukolongo
231	Ruth zulu	Female	Lukolongo
232	Thomas Kahale	Female	Lukolongo
233	Isaac Zhande	Female	Lukolongo
234	Michael Ndolwe	Male	Kapongo
235	Nickson Zulu	Male	Kapongo
236	Mary Shanongwe	Female	Kapongo
237	Milly Zimba	Female	Kapongo
238	Getrude Sinamwenda	Female	Kapongo
239	Sipiwe Siamakoti	Female	Kapongo
240	Costa Banda	Male	Kapongo
241	Mary Moonga	Female	Kapongo
242	Shelly Michelo	Female	Kapongo
243	Tione Muntonga	Female	Kapongo
244	Lucia Nakanga	Female	Kapongo
245	Emeldah Nakombe	Female	Kapongo
246	Elias Mulenga	Male	Kapongo
247	Gift Nakate	Female	Kapongo
248	Reginah Nampungwe	Female	Kapongo

249	Agness Shabombe	Female	Kapongo
250	Judith Banda	Female	Kapongo
251	Catherine Chitenta	Female	Kapongo
252	Jenara Mupona	Female	Kapongo
253	Mable Mumba	Female	Kapongo
254	Margaret Zulu	Female	Kapongo
255	Vanessa Mudenda	Female	Kapongo
256	Moses Mushoke	Male	Kapongo
256	Cephas Kapawa	Male	Kapongo
257	Sileti Cheelo	Male	Kapongo
258	Losina Mbunda	Female	Kapongo
259	Anita Kaluwe	Female	Kapongo
260	Harrison Nyirenda	Male	Kapongo
261	Fostina Halunyona	Female	Kapongo
262	Lister Hameenda	Female	Kapongo
263	Elisha Muzaza	Male	Kapongo
264	Jane Shamilimo	Female	Kapongo
264	Steven Simutunda	Male	Kapongo
265	Mwaka Namwaka	Female	Kapongo
266	Namangolwa Pumulo	Female	Kapongo
267	Olipa Phiri	Female	Kapongo
268	Janet Shamilimo	Female	Kapongo
269	Theresa Mumbuluma	Female	Kapongo
270	Belita Zulu	Female	Kapongo
271	Losta Kapoba	Female	Kapongo
272	Catherine Ndimuna	Female	Kapongo
273	Diness Bupe	Female	Kapongo
274	Sofia Shanongwe	Female	Kapongo
275	Brenda Mainza	Female	Kapongo
276	Prisca Phiri	Female	Kapongo
277	Karen Muyeyama	Female	Kapongo
278	Festo Daka	Male	Kapongo
279	Manix Namukoko	Male	Kapongo
280	Hide Kambela	Male	Kapongo
281	Richard Mwale	Male	Kapongo
282	Monicah Banda	Female	Kapongo
283	Elijah Moyo	Male	Kapongo
284	Lincoln Mvula	Male	Kapongo
285	Merian Sakala	Female	Kapongo
286	Estelle Lungu	Female	Kapongo
287	Jackson Sande	Male	Kapongo
288	Gradson Tembe	Male	Kapongo

289	Brisa Zulu	Male	Kapongo
290	Cley Mudenda	Male	Kapongo
291	Peter Siame	Male	Kapongo
292	Girbant Mumba	Male	Kapongo
293	Angella Njalika	Female	Kapongo
294	Elena Phiri	Female	Kapongo
295	Melalini Mukonka	Female	Kapongo
296	Ireen Phiri	Female	Kapongo
297	Ivey Mulenga	Female	Kapongo
298	Melinda Iwindi	Female	Kapongo
299	Elen Fungwe	Female	Kapongo
300	Christine Mwiinga	Female	Lukolongo
301	Angelina Hamwiinga	Female	Lukolongo
302	Josephine Malembeka	Female	Lukolongo
303	Elica Andison	Female	Lukolongo
304	Dorothy Makosa	Female	Lukolongo
305	Esten Makoka	Female	Lukolongo
306	Joyce Mosi	Female	Lukolongo
307	Elly Nkondo	Female	Lukolongo
308	Phalese Matembo	Female	Lukolongo
309	Mathah Choongo	Female	Lukolongo
310	Beatrice Mbao	Female	Lukolongo
311	Sosina Mulungwe	Female	Lukolongo
312	Evaline Mulenga	Female	Lukolongo
313	Mary Banda	Female	shimabala
314	Sharon Lyashimba	Female	shimabala
315	Mwaka Masiwa	Female	shimabala
316	Rosemary Kabobo	Female	shimabala
317	Catherine Mwanza	Female	shimabala
318	Vincent Mweene	male	Kapongo
319	Justin Mulungwe	male	Kapongo
320	Christopher Sakala	male	Kapongo
321	Zelipa Shawa	Female	Kapongo
322	Lawrence Simoono	male	shimabala
323	Rosemary Kanjaulungwa	Female	shimabala
324	Alice Zulu	Female	shimabala
325	Maggie Mumba	Female	shimabala
326	Weston Baela	male	shimabala
327	Maureen Nkhoma	Female	shimabala

2 List of Key Informant

SN	Name	Gender	Position
1	Mwamba Matthews	Male	Youth organiser
2	Ansilot Mudenda	Male	Kapongo A PTA chairperson
3	Lolianda Maluma	Female	committee member
4	Hangwela Dary	Male	chairperson
5	Nephias Kabanza	Male	chairperson
6	Wamundila Mukelabai	Male	cooperate secretary(nachintanda)
7	chabala elisha	Male	treasurer
8	spider mukuni	Male	headman
9	Loveness Kazale	Female	Head woman
10	Ignatius Shanongwe	Male	WDC chairperson
11	Given Malambo Hibanyama	Male	Secretary (nachitanda cooperative)
12	Bornwell Keembe	Male	SNR Headman Lishiko
13	Clement Mwampikita	Male	Headman
14	John Mupona	Male	P.T.A Chairman
15	moses malambo	Male	Vice Headman
16	kemson kasese	Male	Bishop
17	Given Fungwe	Male	Chairperson
18	Donald Chipoya	Male	Chairperson
19	Enoch Mwiinga	Male	Civic Leader
20	Jane Mutinta	Female	Deputy Headwoman

21	Jane Musumina	Female	New Hope Co-operative Vice-chairperson
22	Catherine Tembo	Female	New Hope Co-operative chairperson
23	Zeckiah F. Muleya	Male	Chairman

END