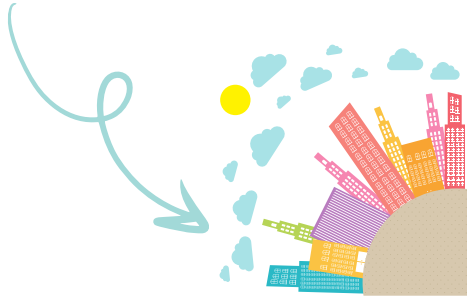


IMAGINE adaptation



Only by understanding what good adaptation looks like, can we think of how to evaluate it.

Get Involved



100 urban imaginaries





We are looking for participants in **100 cities** worldwide. We have worked with an artist to illustrate **31 visions** of urban adaptation.

We are asking participants to sort these illustrations according to how well they represent **their view of adaptation in their city.**

Selection criteria: working on adaptation in a specific city worldwide, able to complete a 30 minute survey.

For more information and to sign up for the study

GO TO OUR SIGN UP FORM

-  @imagineadapt
-  linkedin.com/imagineadapt
-  imagineadapt.bc3research.org
-  imagineadapt@bc3research.org



IMAGINE adaptation

addresses the urgent need to evaluate climate change adaptation in urban areas and understand progress across governance levels.

It argues that the current focus on policy progress can be a useful first step, but it is not indicative of effective adaptation.



Impacts of climate change are happening and communities and governments across the globe are preparing through actions to reduce its impacts and increase climate resilience.

However, **progress made to date is still poorly understood and tracked** due to the lack of a clear way to evaluate how well the world is adapting.

IMAGINE adaptation aims to revisit the concept of adaptation success and go beyond technical framings to consider equity, justice, and maladaptive issues.

By combining **expert and local perspectives** the project seeks to develop a more comprehensive framework for evaluating and achieving **transformative urban adaptation**.

